



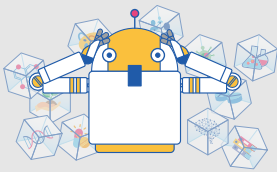
Life Science Database Integration Project

Toward innovation through database integration

To promote creation of new knowledge in life sciences, we implement the following activities in cooperation with various domestic and international organizations.

Program structure

Challenge in integrated use of exploding data and knowledge



- New measurement technologies
- Dramatic rise in research data per research funding
- Dramatic advances in performance of measuring instruments
- Increase number of papers and data volume per paper

1 Establishment of core research databases
Database Integration Coordination Program (DICP)

Establish DBs in each field that integrate domestic and international data

Technologies

Data



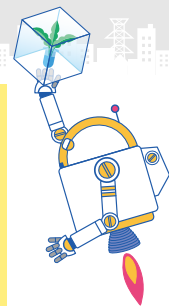
3 Basic web services

Collect location information and terms of use of DBs, and preserve and provide data for the long term

Technologies

2 Development of data integration technology and utilization expansion

Development of fundamental technologies project
Develop technologies and web applications for organization, integration, and advanced use of research data

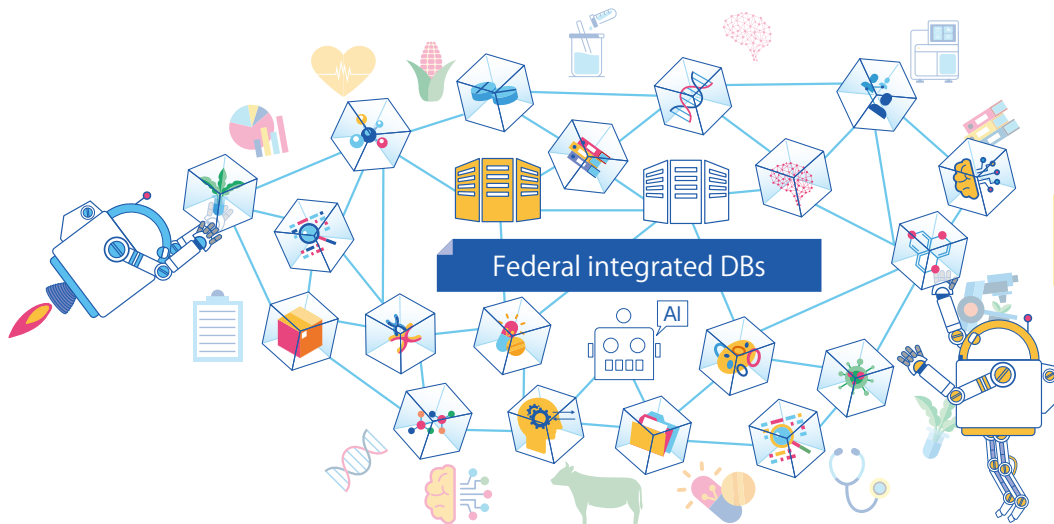


cooperation



Ministries
Institutes

Organize "big data" in the field of life science



Creation of knowledge and innovation that was difficult in traditional research

Rapid response to data sharing and open science!

Web services

NBDC provides, or supports the development and operation of the following databases, tools, etc. through contracted research and development, etc.

1 Establishment of core research databases

Database Integration Coordination Program (DICP)

SSBD database	https://ssbd.riken.jp/database/
INTRARED	https://www.intrared.org/
KEGG MEDICUS	https://www.kegg.jp/kegg/medicus/
GlyCosmos Portal	https://glycosmos.org/
PDBj	https://pdbj.org/
Microbiome Datahub	[under development]
jPOST	https://jpostdb.org/
Shin-MassBank	[under development]
ATTED-II	https://atted.jp/
Japanese Open Genome Omics Platform	[under development]
DeepSpaceDB	https://deepsacedb.com/
MIIDB-AI	[under development]
Cell IO	[under development]
integMET	[under development]

2 Development of data integration technology and utilization expansion

Development of fundamental technologies project

TogoVar	https://togovar.org/
PubCaserFinder	https://pubcasefinder.dbcls.jp/
NBDC Human Database	https://humandbs.dbcls.jp/
TogoMedium	https://togomedium.org/
TogoGenome	http://togogenome.org/
RDF Portal	https://rdfportal.org/
TogoID	https://togoid.dbcls.jp/
TogoTV	https://togotv.dbcls.jp/

3 Basic web services

Integbio Database Catalog	https://integbio.jp/dbcatalog/?lang=en
Life Science Database Cross Search	https://dbsearch.biosciencedbc.jp/?lang=en
Life Science Database Archive	https://dbarchive.biosciencedbc.jp/index-e.html

